

2022.11.19.(SAT)

---

# Social Farming as an Alternative Care to a Globalizing Rural Society

Wonjee Cho(Jeonbuk Institute)

# Contents

---



- 01** What is 'Social Farming'?
- 02** When did it begin?
- 03** What is social farming in Korea?
- 04** What will we do in the future?

2022.11.19(SAT)

---

# What is 'social farming'?

# What is 'social farming'?

---

## Social

- “Society”
  - People in general thought of as living together in organized communities with shared laws, traditions, and values
  - Small group: relationship
  - Weness

## Farming

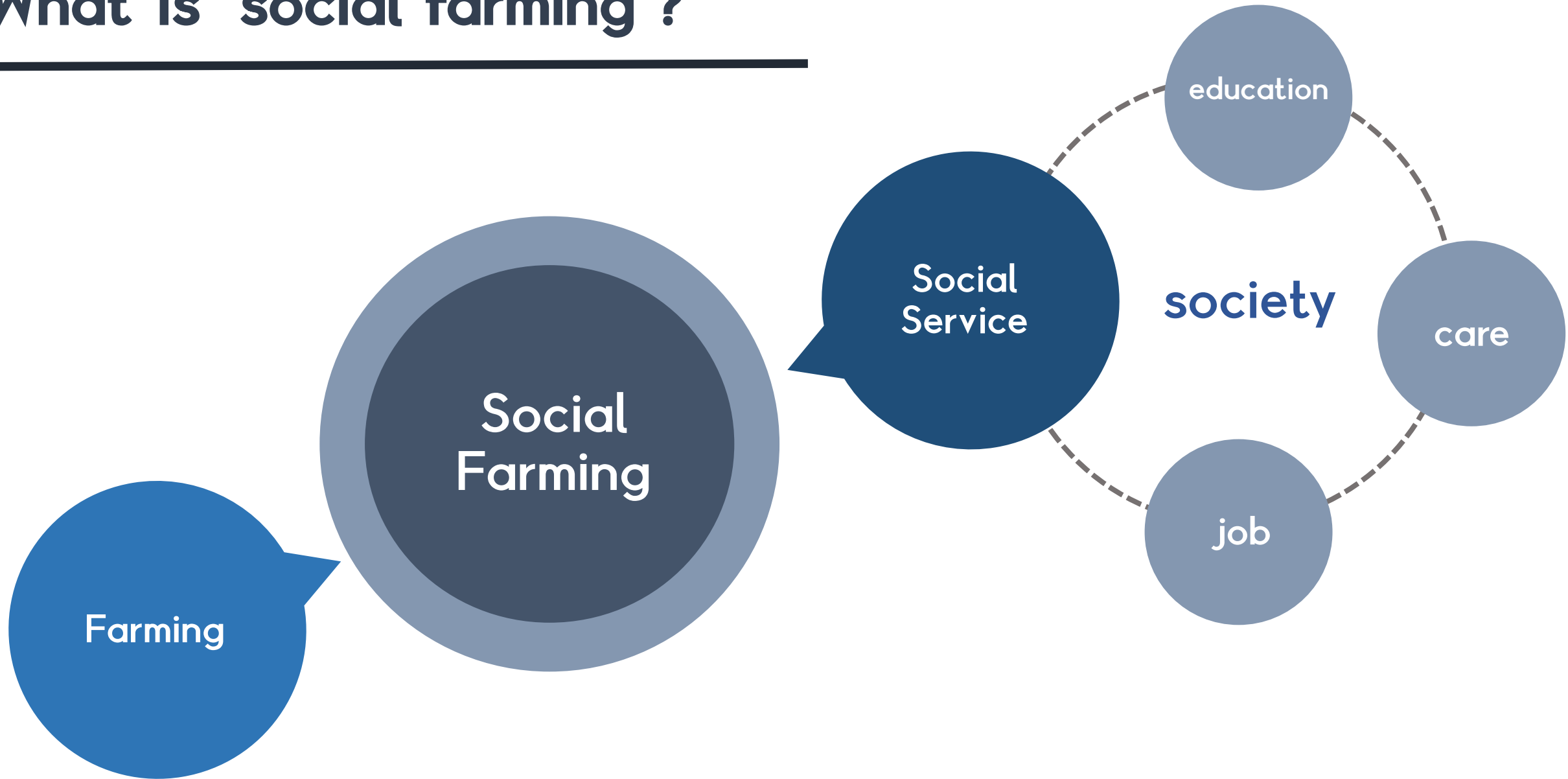
- Agriculture : the science or occupation of farming
- Farming : the job or business of running a farm

## Social Farming

- Social farming
  - Activities that we do farm work together **with whom?**
  - Activities using agricultural resources to generate **social services** in rural areas (Iacovo & O'Connor, 2009)

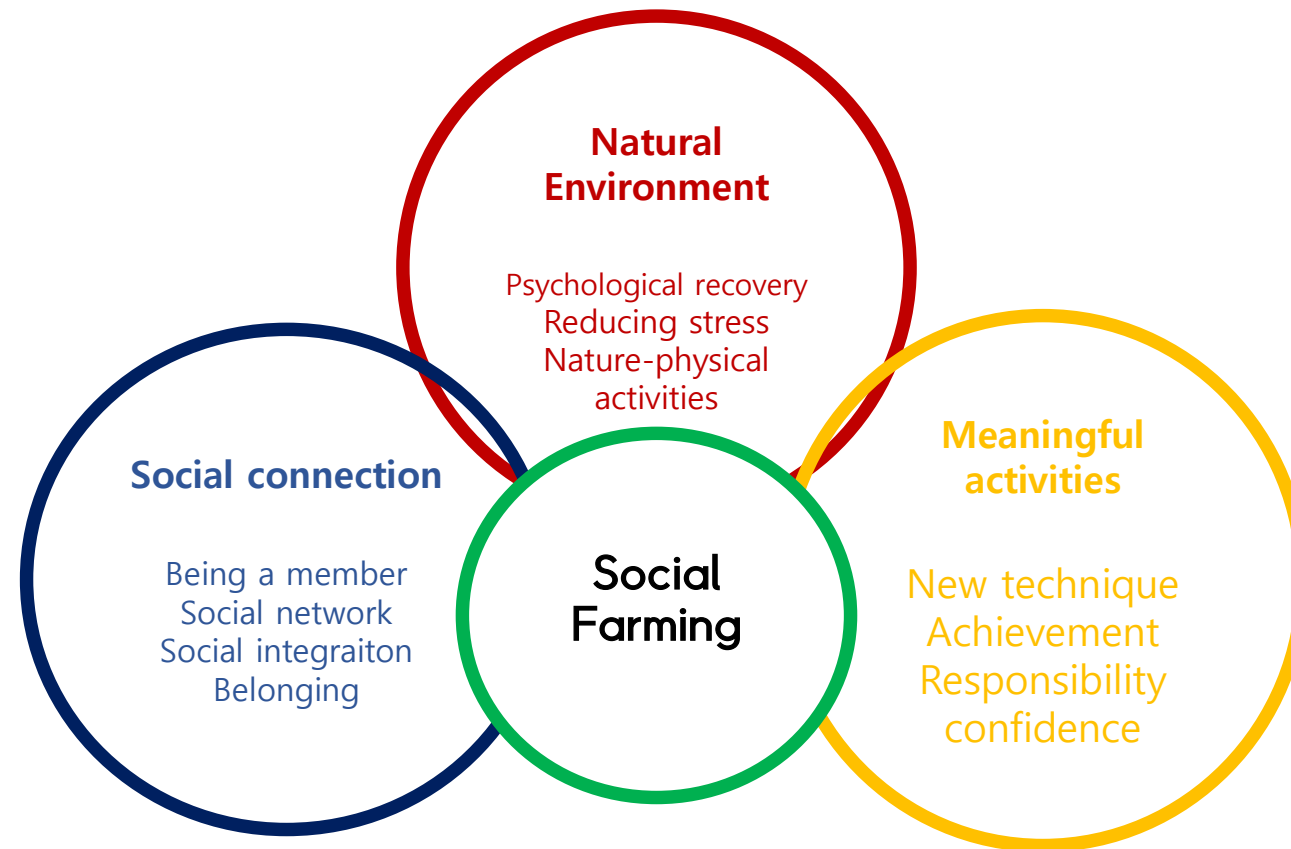
# What is 'social farming'?

---



# What is 'social farming'?

---



# What is 'social farming'?

---



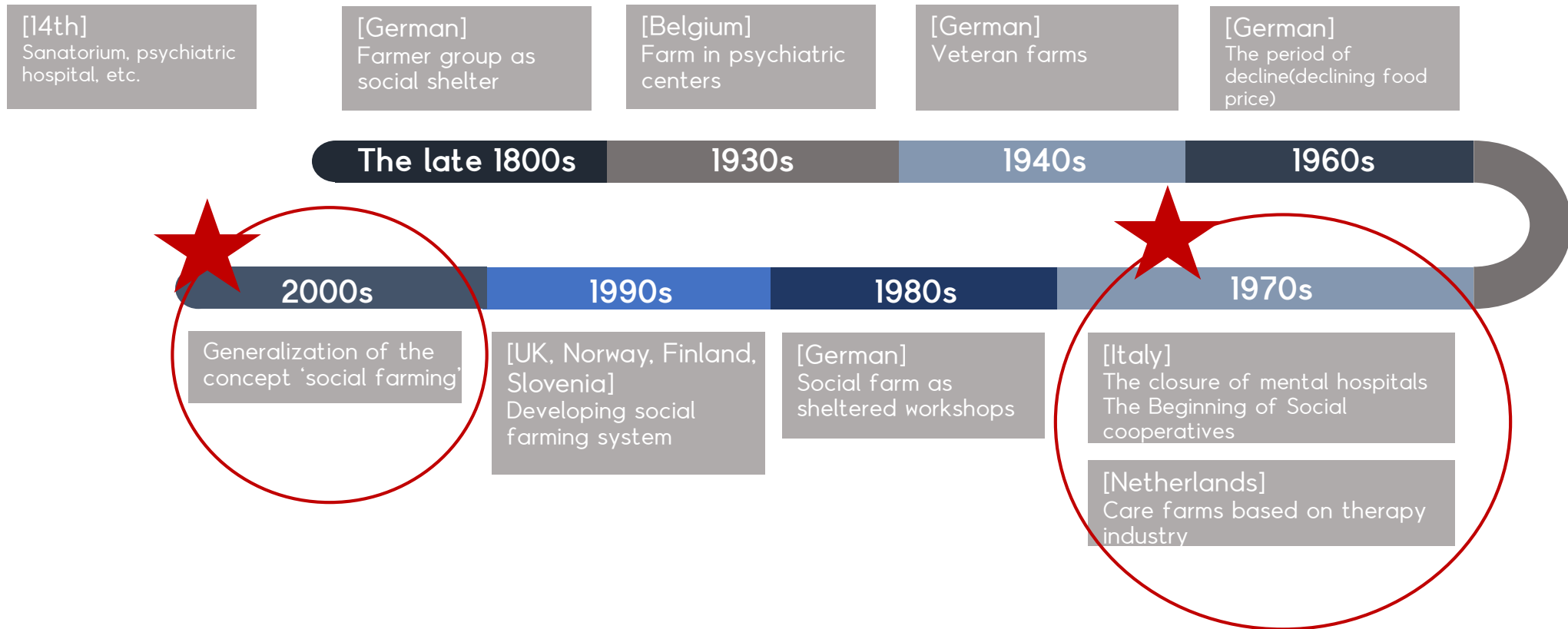
2022.10.28(금)

---

**When did it begin?**



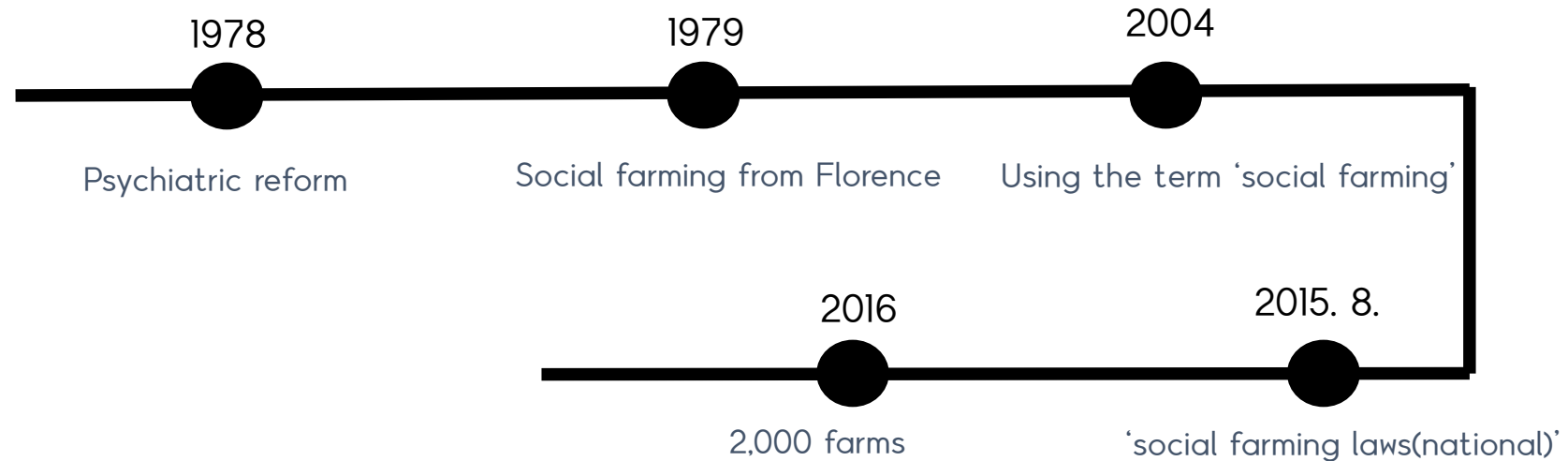
# When did it begin?



# When did it begin?



## Italy



- Social cooperatives : type A, type B

Type A : social cooperatives offering care-centered service after making a contract with public organizations

Type B : labor-integrated social cooperatives offering vocational rehabilitation, education

# When did it begin?

---

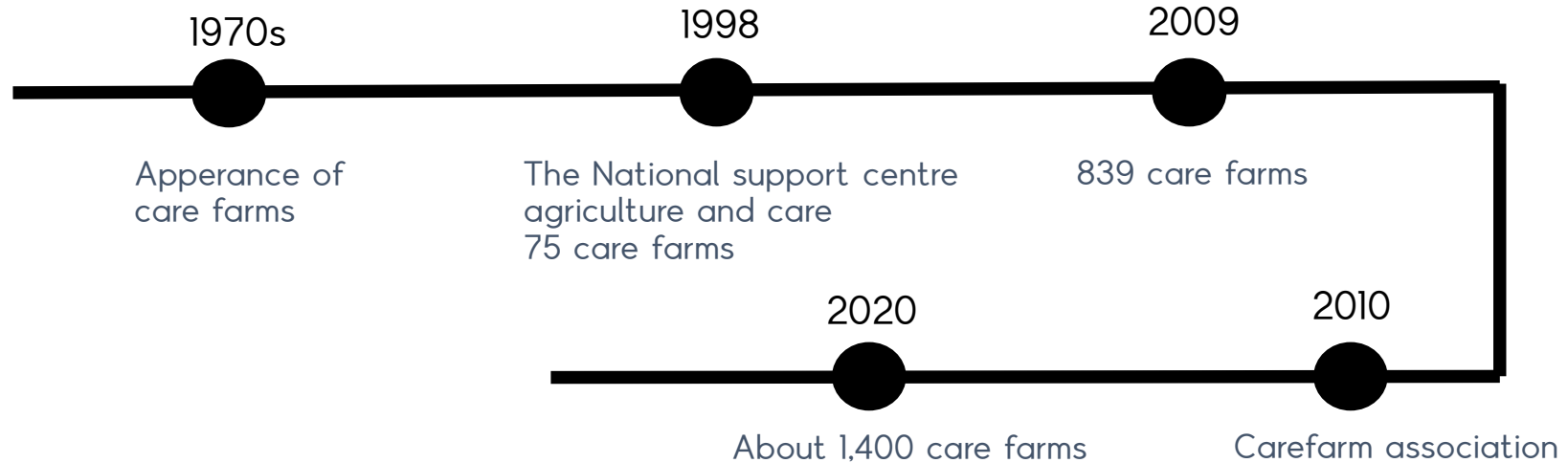


## Italy

- social cooperatives laws(1991)
- From the mid-2000s, local governments' legislation for social farming → national laws(2015)
  - Social farming laws
    - 1) Social farm : agriculture income should be over 30% of total incomes
    - 2) Offering services empowering the socially disadvantaged

# 사회적 농업의 역사

## Netherlands



- Care farm recognized as a care organization
- Care receiver : financially supported in national health and welfare service system
- Care farming : activities offering therapy and care with farming and natural resources
- Family-running farms, adult daycare center-running farms

# 사회적 농업의 역사



## Japan

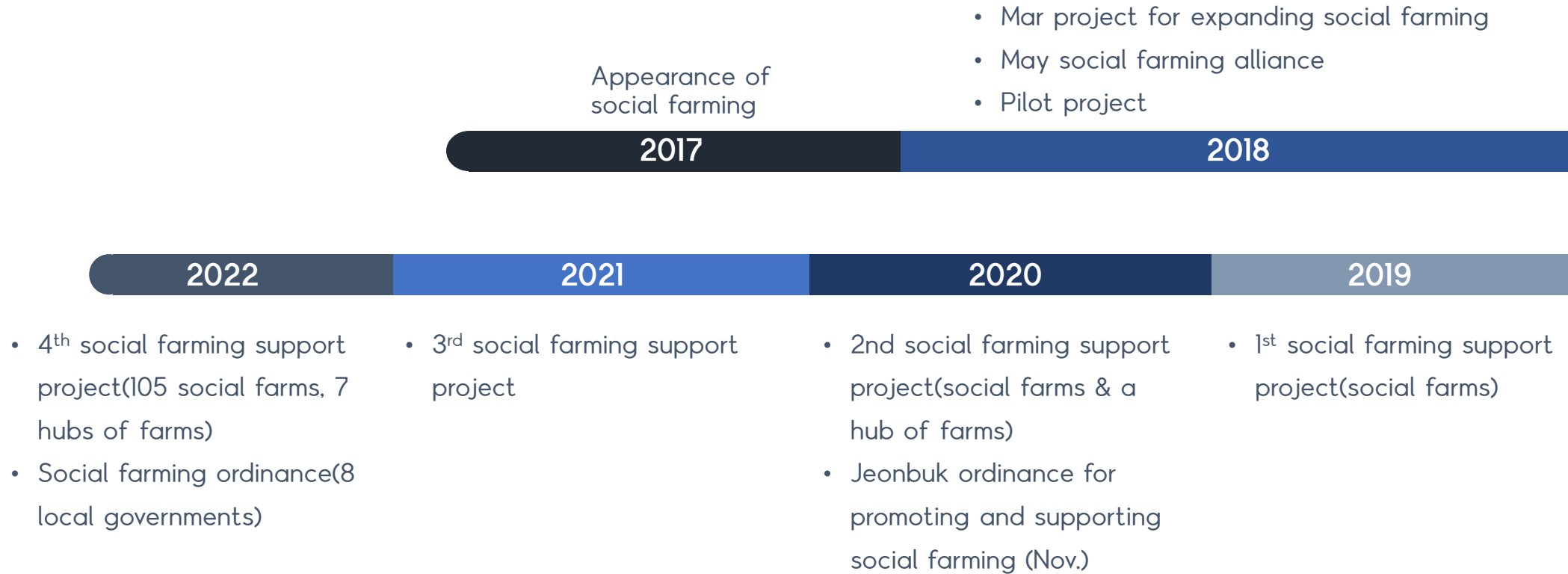


- The early 20<sup>th</sup> : gardening for the disabled of psychiatric hospitals
- The early 1990s : development of a variety of gardening after the collapse of the bubble economy and the Great Hanshin Earthquake
- Farming's welfare power : contributing to rehabilitation, health improvement, regional activation

# What is social farming in Korea?

# What is social farming in Korea?

---





# What is social farming in Korea?

## Social farms

- Social farms provide the socially disadvantaged with social services including education, care, and jobs.
- A variety of the disadvantaged receive farming-related activities and services (the disabled, elderly, children, young people, immigrated women of multicultural families, etc.)





# What is social farming in Korea?

## Local service community

- From 2022, 22 communities
- Total social and economic service for rural people(the disadvantaged) through cooperation among various service providers
- Coordinator : finding the disadvantaged and their needs, connecting with service providers, and managing them
- Coordinator, rural people, socioeconomic service providers(person, organization, etc)

<b>Health &amp; medical</b>	<ul style="list-style-type: none"><li>• Helping move to hospitals</li><li>• Social farming program</li><li>• Health class</li><li>• Connecting to welfare organization</li></ul>
<b>Living welfare</b>	<ul style="list-style-type: none"><li>• Helping move to a hair salon, hair care service to home</li><li>• Washing, meal delivery, grocery shopping, maid service</li><li>• Visiting ambulatory bathing service</li><li>• Providing meals, companion to talk with, etc.</li></ul>
<b>Education &amp; culture</b>	<ul style="list-style-type: none"><li>• Lifelong education</li><li>• Infants and young children care &amp; education</li><li>• Culture clubs, performances, book rental service, etc.</li></ul>
<b>Settlement conditions</b>	<ul style="list-style-type: none"><li>• Water and sewage, home appliances repair</li><li>• Wallpapering, stair railing installation, replacement of the floorboard</li><li>• Security patrol, creating a walkway, etc.</li></ul>
<b>Economic activities</b>	<ul style="list-style-type: none"><li>• Connecting to public employment, consulting business and employment</li><li>• Social farming vocational training, etc.</li></ul>

# What is social farming in Korea?

## A community-unity social farms

- From 2023, a new type of social farming
- Cooperation among several social farms in a community
- Providing care, education, job service to a variety of the disadvantaged
- Wanju socioeconomic network : managing and supporting several social farms (each social farm provide its own program to various)

**우리 농장 핵심 프로그램**

**#봉동 드림얼매농장-드림얼매학교**  
주간보호시설 어르신들의 사회화 및 적응 활동을 도와요.

**#비봉 향치두레농장-독거노인돌봄**  
노년기 우울증, 고독사 등을 방지하는 농장 활동과 치유 프로그램으로 어르신들의 건강한 노년 생활을 도와요.

**#이서 두레농장-느린농부교실**  
농업에 관심이 있는 지역민들과 귀농·귀촌인 등 초보농가들을 대상으로 텃밭 모임을 하며 농장 경영 능력 습득하고 함께 두터운 사회적 관계를 맺어요.

**#소양 은혜의농장-꿈이 자라는 땅**  
하우스 한 동을 임대해 지역 보육원생들이 직접 재배한 작물을 요리하거나 코컬푸드, 농가 레스토랑에 납품해요.

**#구이 고란애통경-우리는 한가족**  
다문화가족의 지역사회 통합을 돕고, 자립 기반을 마련할 수 있도록 농장 활동과 요리, 공예, 원예 활동을 지원해요.

**#고산 꿈바라기농장-매주꽃일무렵**  
마을주민과 함께 콩 농사, 매주만들기, 장담그기 등을 하고 장애인, 고령 소농, 독거노인, 도시민이 어우러지는 동네이야기방 등으로 소통의 기회를 만들어요.

# What is social farming in Korea?

---

## Hub of social farms

- 7 hubs of social farms(2022)
- Managing and supporting social farms in 7 zones of Korea
- Finding and fostering social farms
- Networking with social farms, government, local governments, social farming-related organizations and so on
- Education, research, counseling, promotion, etc.

# What is social farming in Korea?



## 농림축산식품부 농촌사회복지과

정책 총괄



## 농업·농촌 사회적경제 지원센터(한국농어촌공사)

홍보/판로/네트워크/연구 지원

국제심포지엄, 사회적경제 박람회 등 행사 주관 및 참여지원, 사회적 농업 온라인 플랫폼 운영, 지원, 온라인 마켓 입점 지원, 전문서비스 지원 등



## 거점농장

사회적 농장에 대한 현장 교육 및 네트워크 중심기관으로 운영

사회적 농장 및 희망자에 대한 자문 및 교육을 담당하고 사회적 농업을 확산하는 역할, 거점농장과 네트워크를 맺은 복지/교육/보건 기관 등과 신규농장들 간의 연결망 지원, 지역 내 사회적 농장 활동 현황 수시 점검, 홍보활동 지원, 기타 행정적 지원

표 1 거점농장의 사회적 농장 지원 활동.

	2022	2021	2022
자문, 교육	<ul style="list-style-type: none"> <li>- 사회적 농업 배움터 운영</li> <li>- 사회적 농업 운영(귀농·귀촌형 사회적 농장) 매뉴얼 개발</li> </ul>	<ul style="list-style-type: none"> <li>- 현장 자문 및 교육</li> <li>- 사회적 농업 기초 컨설팅</li> <li>- 사회적 농업 운영(아동·청소년 돌봄) 매뉴얼 개발</li> <li>- 경상북도 사회적 농업 설명회 개최</li> </ul>	<ul style="list-style-type: none"> <li>- 현장 모니터링 및 자문</li> <li>- 사회적 농업 기초컨설팅</li> <li>- 사회적 농업 활동 안내서 개발</li> </ul>
네트워크	<ul style="list-style-type: none"> <li>- 사회적 농장 협의체 운영</li> </ul>	<ul style="list-style-type: none"> <li>- 사회적 농장 네트워크 회의</li> <li>- 사회적 농업 성과 공유회</li> </ul>	<ul style="list-style-type: none"> <li>- 사회적 농장 네트워크 회의</li> <li>- 한국사회적농업협회 워크숍 개최</li> <li>- 사회적 농업 포럼 개최</li> </ul>
홍보, 마케팅	<ul style="list-style-type: none"> <li>- 사회적 농장 홍보영상 제작</li> <li>- 공동브랜드 &lt;모두가게&gt; 개발</li> <li>- 사회적 농업 홍보관 및 교육장 개소</li> </ul>	<ul style="list-style-type: none"> <li>- 2021 대한민국 사회적 경제 박람회 참가</li> <li>- 사회적 농업 아카이브 &lt;소셜팜아카이브&gt; 구축</li> <li>- 신규 사회적 농장 홍보영상 제작</li> <li>- 사회적 농장 활동백서 『우리는 사회적농업을 합니다』 발간</li> </ul>	<ul style="list-style-type: none"> <li>- &lt;제4회 대한민국 사회적경제 박람회&gt; 참가</li> <li>- 사회적 농업 아카이빙 &lt;소셜팜아카이브&gt; 운영</li> <li>- 사회적 농업 활동 영상 제작</li> </ul>

2022.11.19(SAT)

---

**What will we do  
in the future?**

# What will we do in the future?

---

## The values of social farming

- What is 'farming'?
  - Only for food production?
- Why should we focus on 'social farming'?
  - Opportunity of knowing others, being and doing together, feeling a sense of weness
  - Promoting social integration through farming with the socially disadvantaged

# What will we do in the future?

---

## The future of social farming

- Increasing old people in rural areas
  - Increasing their need of living care
  - Providing living care in rural areas
- Increasing the socially disadvantaged in Korea
  - Rural areas as alternative place for their social service by farming
  - We need to have a new perspective on farming and rural areas!

2022.10.28(금)

---

# Q & A

TEL : (063)280-7194

FAX : (063)286-9206

MAIL : [wonjee@jthink.kr](mailto:wonjee@jthink.kr)